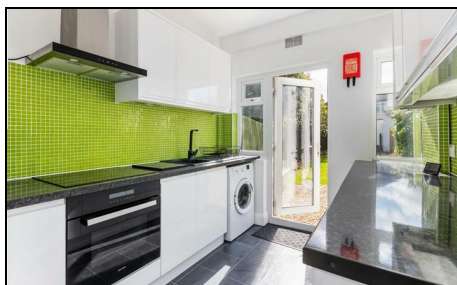


**Bushey Road  
Raynes Park, SW20 0JN**

**Guide Price £635,000 Freehold**



**This spacious and centrally located 1,512 sqft THREE DOUBLE BEDROOM, 1930s Mid Terrace "Blay" House has a lovely 62ft South Facing garden and is ideally located only 0.2 Miles to Raynes Park High Street and Station. There is also a modern fitted kitchen and bathroom, two good sized reception rooms and useful loft/craft room. Offering excellent potential to further extend S.T.P.P. Sold with No Onward Chain.**

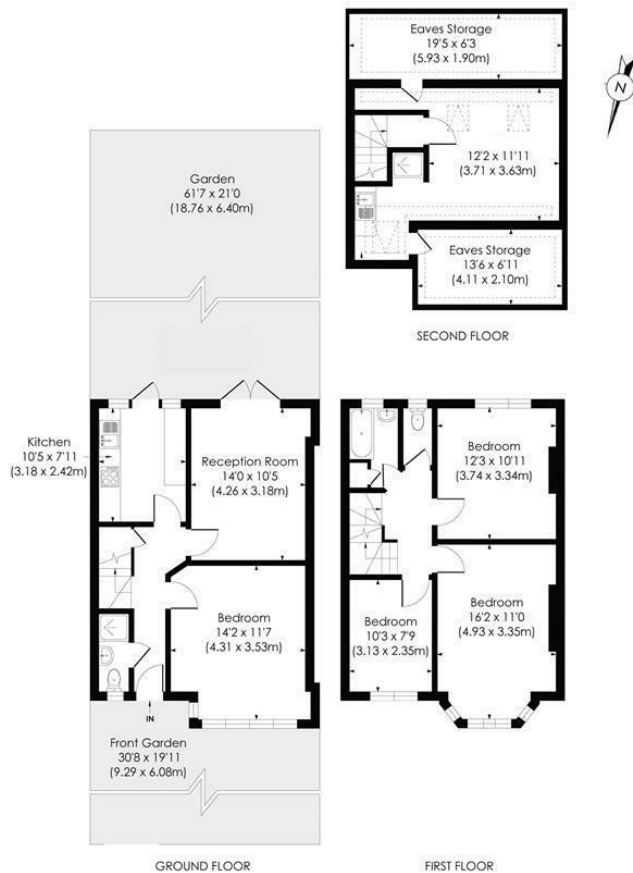


## BUSHEY ROAD, SW20

Approx. Gross Internal Floor Area

1512 Sq. ft/140.43 Sq. m (Including reduced height)

1239 Sq. ft/115.13 Sq. m (Excluding reduced height)



© Pixangle Property Marketing Ltd. info@pixangle.com Tel: 0208 870 2118

pixangle  
PROPERTY MARKETING

This floor plan has been prepared for the purpose of illustration only in accordance with the latest RICS code of measuring practice and is not to scale. All measurements and areas are approximate and whilst every effort has been made to ensure the accuracy of the plan contained here, no responsibility is taken for any error, omission or misstatement.

- Three Double Bedroom With Additional Loft Room
- 1,512 sqft - 1930s "Blay" Mid Terrace House
- Potential To Further Extend S.T.P.P
- 0.2 Miles To Raynes Park Station And High Street
- No Onward Chain
- Two Spacious Reception Rooms
- 61ft South Facing Rear Garden
- Modern Kitchen and Bathroom
- EPC Rating - C
- Council Tax Band - D



Energy Efficiency Rating		
Very energy efficient - lower running costs	Current	Potential
A (91-100)		82
B (81-90)		
C (69-80)	69	
D (55-68)		
E (39-54)		
F (21-38)		
G (1-20)		
Not energy efficient - higher running costs		
England & Wales		
EU Directive 2002/91/EC		

For Free Mortgage Quote and Best Mortgage Rates, call Ellisons Mortgage Advisor on 0208 944 9595



Although these particulars are believed to be correct, their accuracy is not guaranteed and they do not form part of any contract.

Celebrating 30 years  
of successful Sales and  
Lettings in Merton

